

Advanced pH Neutralization Control Using Model Reference Adaptive Control (MRAC) with MIT Rule

^{1,*}Zeynep Yilmazer Hitit

^{1*}*Ankara University, Department of Chemical Engineering, 06100, Ankara, TURKEY*

* Zeynep Yilmazer Hitit, Ankara University, Faculty of Engineering, Department of Chemical Engineering; 06100 Tandogan, Ankara; Turkey

E-mail: zyilmazer@ankara.edu.tr

Phone: +90 (312) 203 34 33

Fax: +90 (312) 212 15 46

ORCID : <https://orcid.org/0000-0001-9078-191X>

SUPPLEMENTARY FILE

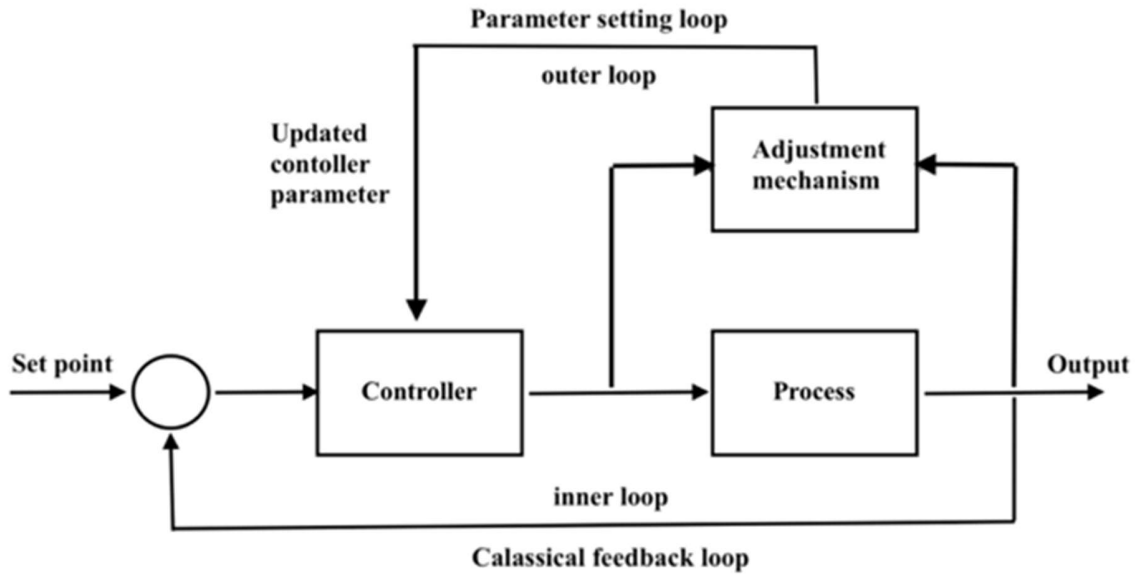


Figure S-1. Block diagram of adaptive control

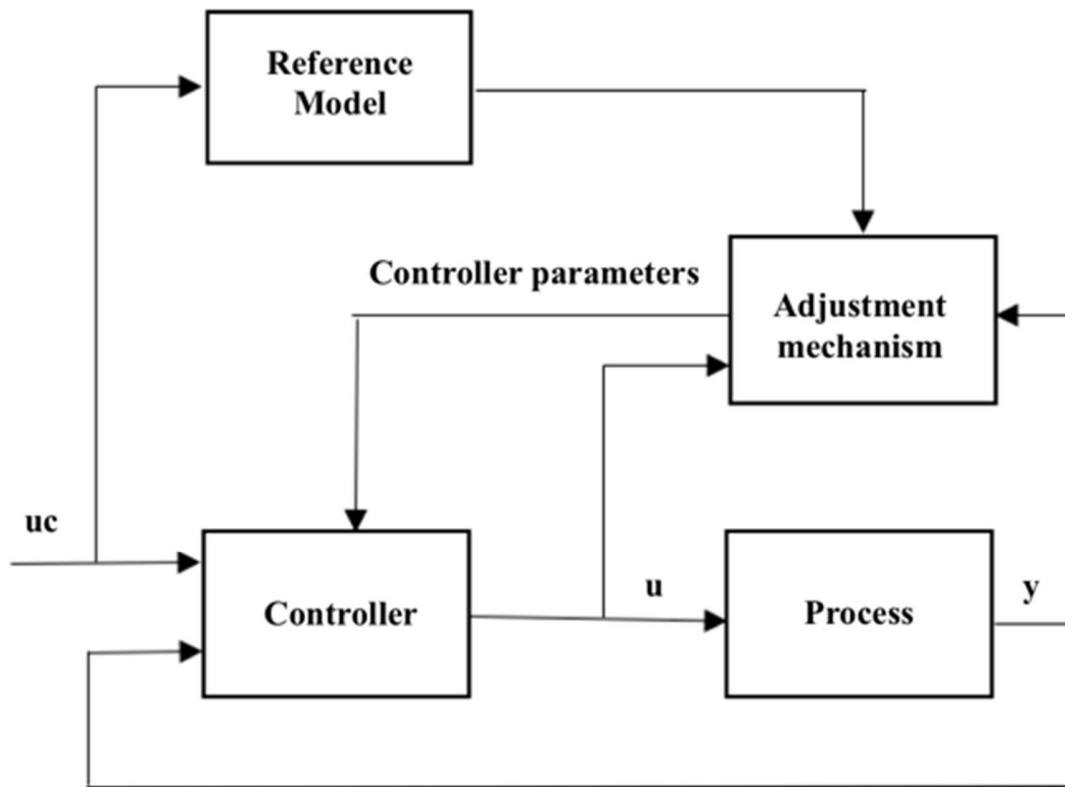


Figure S-2. Block diagram of a model reference adaptive control (MRAC)